



A·K
BELLINGER
· GALLERY ·

Jesse Dayan
Cosima Scales

TWO FINE PAINTERS

ALLISON BELLINGER GALLERY

0439 180 346

AKBELLINGER@OUTLOOK.COM

INSTA AKBELLINGER

WWW.AKBELLINGERGALLERY.COM

Jesse Dayan is a Melbourne based artist he has been a finalist in several national art awards including The Arthur Guy Memorial Art Prize, The Len Fox Painting award, The City of Albany Art Prize, The Bayside Acquisitive Art Prize and The National Works on Paper Award. He has previously been shortlisted for the Brett Whiteley Traveling Art Scholarship and the Australia Council – Kunstlerhaus Bethanien Residency.

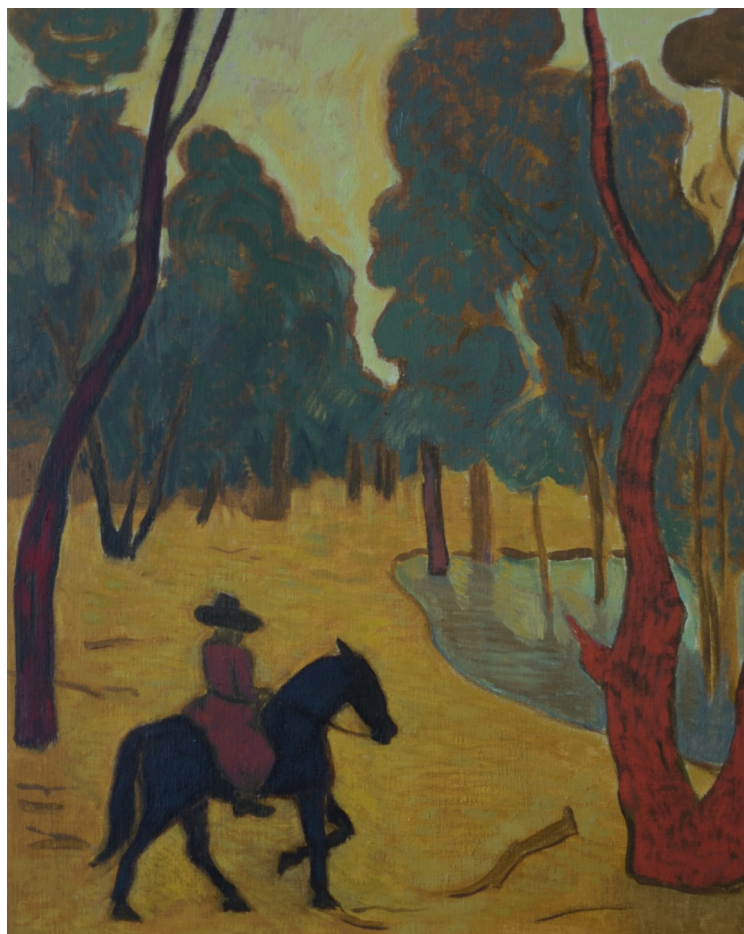
This suite of paintings is derived from the dream space of memory and imagination. Concrete memories from childhood such as walking around a paddock attempting to catch a mischievous horse and long rides through red gum forests are a recurring theme within these paintings. These bucolic memories are mixed as in dreams with many other references and fleeting feelings of longing and disconnect. Some of the references that counterpoint the memories in these paintings are colour harmonies from Die Brucke painters and the fairytale-like settings of the French Symbolist painters. There is a nostalgia in these paintings, a sense of journey and transience but these feelings are balanced by the comforting timelessness that exists in the connection between humans and horses.



Journey
30 x 35 cm
Oil on Poplar Plywood
Framed in
Lime Wash Vic Ash
\$950



Rider on White Horse
30 x 40 cm
Oil on Poplar Plywood
Framed in
Lime Wash Vic Ash
\$1100



Dusk in the Forest

20 x 25 cm

Oil on Poplar Plywood
Framed in Lime Wash

Vic Ash

\$700



Lone Traveller

30 x 40 cm

Oil on Poplar Ply-
wood Framed in
Lime Wash Vic
Ash

\$1100

Jesse Dayan

TWO FINE PAINTERS

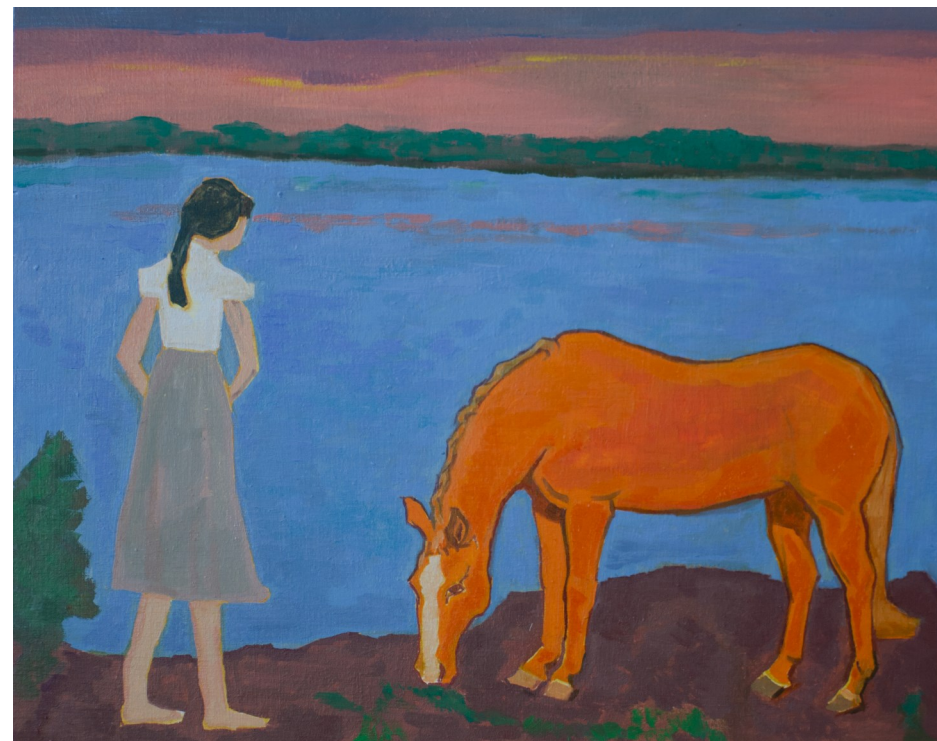


Woman with Chestnut Horse

25 x 20 cm

Oil on Poplar Plywood
Framed in Lime Wash Vic
Ash

\$700



*Girl by the Ocean with
Chestnut Horse*

20 x 25 cm

Oil on Poplar Plywood
Framed in Lime Wash Vic
Ash

\$700



Room from a Dream

20 x 25 cm

Oil on Poplar Plywood
Framed in Lime Wash Vic
Ash

\$700



Room with Ocean View

25 x 25 cm

Oil on Poplar Plywood
Framed in Lime Wash Vic
Ash

\$750

Cosima Scales is a painter based in Meanjin (Brisbane) who makes paintings of intimate scenes and spaces that reflect on personal experience, working both from life and from snapshot references. Since completing a Master of Visual Art by research at the Queensland College of Art in 2018, she has held group and solo exhibitions across Brisbane, Melbourne, Sydney and Inverell. In 2020, she was a finalist in the Brett Whiteley Travelling Art Scholarship.

Home is a house on a hill, where windows look onto neighbouring rooftops and a passionfruit vine hurries along the fence. Inside, funny details lead me to think it was built by an enthusiastic amateur—a leaning hallway, mismatched shelves, and a tiny sunroom behind an unruly hibiscus. The paintings in this series are observations of the space that contains me, my possessions, my routines and ordinary worries. I lifted my eye from the tabletop view that has held my attention for the past few years, during which I primarily painted still lifes. I looked up and into rooms. I noticed colours, patterns and grids repeating across spaces, and I was surprised by moments of beauty, like the modulations of white and grey in the corners of rooms and a blue twilight through my windows.



Bedroom Window, Twilight

21 x 17.5 cm
Oil on Aluminium
\$550



Green Bed

25.5 x 21 cm
Oil on Aluminium
\$650



In Bed

21 x 17.5 cm

Oil on Aluminium

\$550



Tote Bags

25.5 x 21cm

Oil on Aluminium

\$650



Getting Dressed

21 x 17.5 cm

Oil on Aluminium

\$550



*Bedroom
Window, Night*

21 x 17.5 cm

Oil on Aluminium

\$550



Bathroom Window

21 x 17.5 cm
Oil on Aluminium
\$550



Coat Rack

21 x 17.5 cm
Oil on Aluminium
\$550



AK Bellinger Gallery is now partnered with Art Money
10 payments over 10 months, interest free