

LITTLE BIG WORLD *an exhibition by* CATHERINE CASSIDY

CATHERINE CASSIDY is a Sydney-based artist, born in Ballarat, Victoria. Educated at Melbourne's RMIT and at the National Art School Sydney. She was awarded a Master of Fine Art in Painting in 2011 with a body of work and thesis on a Re-Appraisal of Metonymy in Contemporary Landscape Response. She has been a finalist in many state and national awards including the Paddington Art Prize, AGNSW Dobell Drawing Prize, NSW Parliament House Plein-Air Painting Prize, Mosman Art Prize, Portia Beach Portrait Award and the prestigious National Works on Paper Award 2014 when her work was acquired for the permanent collection of Mornington Peninsula Regional Gallery.

Cassidy has held regular solo and group shows in Sydney and in 2017 was invited by French artist Claire Colin-Collin to exhibit alongside 10 French contemporary abstractionists in Paris. The exhibition, *Subito Presto2*, was hosted by Progress Gallery Paris and highlighted 11 artists response to intuitive mark making.

"Catherine Cassidy's work holds a boldness in its coloured marks and scribbles – dense and delicious. You can see the joy of her hand. The deliberation of the erasures. She is fearless. Never afraid of clumsiness, beauty or the awkwardness and irreverence of childhood."

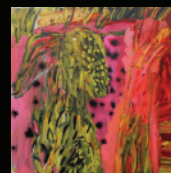
– Claire Colin
Subito Presto2,



Track with Caves and Ferns



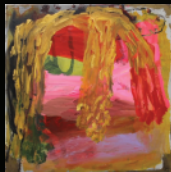
Fire on the M1



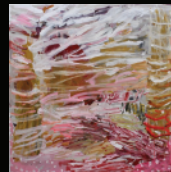
Palm and Hot Grassland



Trees Near Inverell



Small Overhang



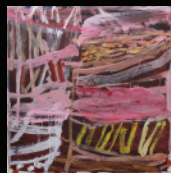
Eroded Gully Inverell 1



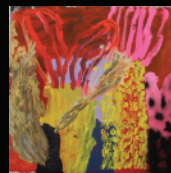
Burnt Branch



Hills Dungog



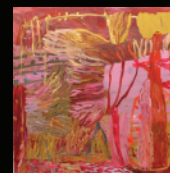
Eroded Gully Inverell 2



Fire at the Bushranger Tree



Light Clyde River



Double Yellow Grassland



Bend at the Beehives 2



Small Firecloud



Trees Like Clouds



Neon Palm 2

LITTLE BIG WORLD *an exhibition by* CATHERINE CASSIDY

LIST OF WORKS

Project Gallery90 June 2019

ALL WORKS completed Feb-May 2019

1. Burnt Branch	40x40cm	vinylique on birch panel	\$ 800
2. Small Firecloud	40x40cm	vinylique on birch panel	\$ 800
3. Hills Dungog	40x40cm	vinylique on birch panel	\$ 800
4. Fire on the M1	60x60cm	vinylique on birch panel	\$1000
5. Neon Palm2	60x60cm	vinylique on birch panel	\$1000
6. Small Overhang	60x60cm	vinylique on birch panel	\$1000
7. Fire at The Bushrangers Tree	60x60cm	vinylique on birch panel	\$1000
8. Neon Palm1	H76xW56cm	vinylique on birch panel	\$1100
9. Trees Near Inverell	76x76cm	vinylique on polyester	\$1200

CATHERINE CASSIDY LIST OF WORKS CONT.

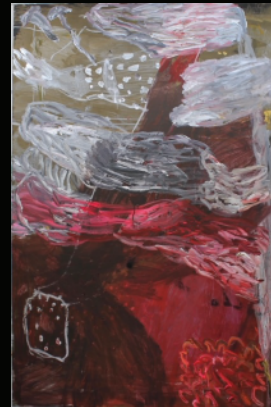
10. Palm and Hot Grassland	92x92cm	vinylique on polyester	\$3000
11. Eroded Gully1 Inverell	122x122cm	vinylique on polyester	\$3600
12. Eroded Gully2 Inverell	122x122cm	vinylique on polyester	\$3600
13. Light Clyde River	122x122cm	vinylique on polyester	\$3600
14. Bend at the Beehives2	122x122cm	vinylique on polyester	\$3600
15. Trees Like Clouds	152x152cm	vinylique on polyester	\$4300
16. Track with Caves and Ferns	152x152cm	vinylique on Belgian linen	\$4500
17. Double Yellow Grassland	152x152cm	vinylique on polyester	\$4300
18. Pigeon House on Fire	H182xW122cm	vinylique on polyester	\$4500
19. Yellow Track	H152cm xW196cm	vinylique, spray enamel on polyester	\$4600
20. Big Cloud	H152cmxW196cm	vinylique, spray enamel on polyester	\$4600



Yellow Track



Neon Palm 1



Pigeon House on Fire



Big Cloud

Catherine's work holds a boldness that does not conform to the well-worn iconography of Australian landscape painting.

-Terri Brooks